

HABITAT

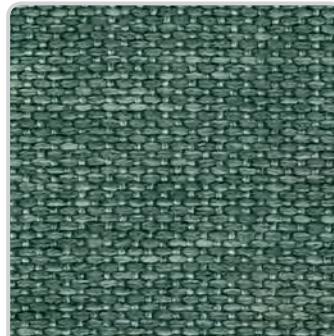
| | |
|-------------------------|--|
| Composition | 100% Polyester |
| Abrasion resistance | >30,000 (160 000) |
| Color fastness to light | 5 |
| Pilling resistance | 4-5 |
| Cleaning | Foam Cleaning/Wash 40° |
| Ignitability | EN 1021-1 (Cigarette) BS 5821 P.1 source 0 Calif. Bul 117 Sec. E |



701
PUMICE



703
GREY



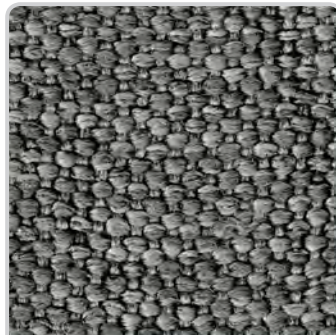
705
TEAL



707
GRAPHITE



709
EBONY



711
STEEL



713
ALMOND